



C/EBP ϵ (phospho Thr74) Polyclonal Antibody

Catalog No	YP-Ab-01393
Isotype	IgG
Reactivity	Human;Rat;Mouse;
Applications	WB;IHC;IF;ELISA
Gene Name	CEBPE
Protein Name	CCAAT/enhancer-binding protein epsilon
Immunogen	The antiserum was produced against synthesized peptide derived from human C/EBP-epsilon around the phosphorylation site of Thr74. AA range:40-89
Specificity	Phospho-C/EBP ϵ (T74) Polyclonal Antibody detects endogenous levels of C/EBP ϵ protein only when phosphorylated at T74.
Formulation	Liquid in PBS containing 50% glycerol, 0.5% BSA and 0.02% sodium azide.
Source	Polyclonal, Rabbit,IgG
Purification	The antibody was affinity-purified from rabbit antiserum by affinity-chromatography using epitope-specific immunogen.
Dilution	Western Blot: 1/500 - 1/2000. Immunohistochemistry: 1/100 - 1/300. Immunofluorescence: 1/200 - 1/1000. ELISA: 1/20000. Not yet tested in other applications.
Concentration	1 mg/ml
Purity	$\geq 90\%$
Storage Stability	-20°C/1 year
Synonyms	CEBPE; CCAAT/enhancer-binding protein epsilon; C/EBP epsilon
Observed Band	34kD
Cell Pathway	Nucleus .
Tissue Specificity	Strongest expression occurs in promyelocyte and late-myeloblast-like cell lines.
Function	function:C/EBP are DNA-binding proteins that recognize two different motifs: the CCAAT homology common to many promoters and the enhanced core homology common to many enhancers.,online information:CEBPE mutation db,PTM:Phosphorylated.,similarity:Belongs to the bZIP family. C/EBP subfamily.,similarity:Contains 1 bZIP domain.,subunit:Binds DNA as a dimer and can form stable heterodimers with C/EBP delta.,tissue specificity:Strongest expression occurs in promyelocyte and late-myeloblast-like cell lines.,
Background	The protein encoded by this gene is a bZIP transcription factor which can bind as a homodimer to certain DNA regulatory regions. It can also form heterodimers with the related protein CEBP-delta. The encoded protein may be essential for terminal differentiation and functional maturation of committed granulocyte progenitor cells. Mutations in this gene have been associated with Specific Granule Deficiency, a rare congenital disorder. Multiple variants of this gene have



been described, but the full-length nature of only one has been determined. [provided by RefSeq, Jul 2008],

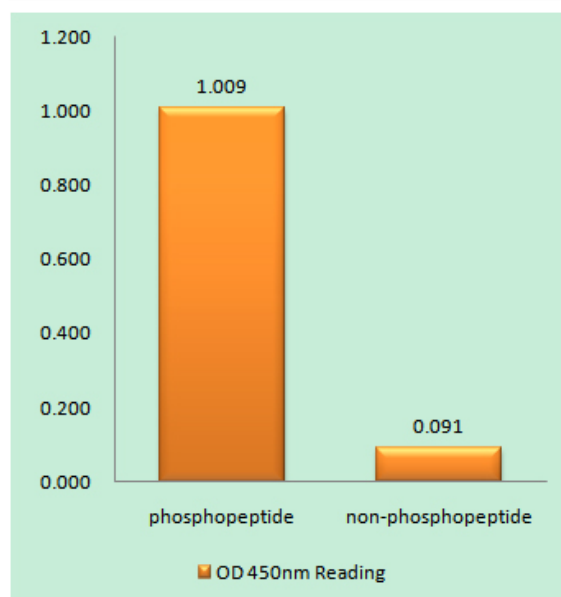
matters needing attention

Avoid repeated freezing and thawing!

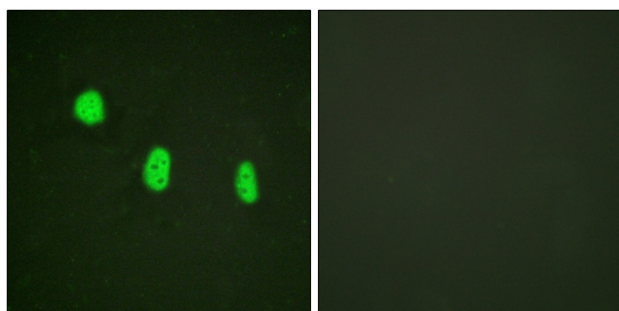
Usage suggestions

This product can be used in immunological reaction related experiments. For more information, please consult technical personnel.

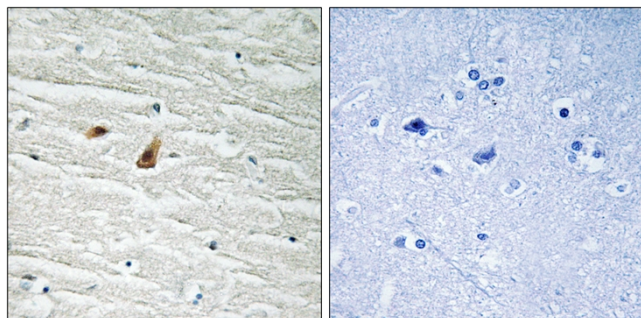
Products Images



Enzyme-Linked Immunosorbent Assay (Phospho-ELISA) for Immunogen Phosphopeptide (Phospho-left) and Non-Phosphopeptide (Phospho-right), using C/EBP-epsilon (Phospho-Thr74) Antibody



Immunofluorescence analysis of HeLa cells, using C/EBP-epsilon (Phospho-Thr74) Antibody. The picture on the right is blocked with the phospho peptide.



Immunohistochemistry analysis of paraffin-embedded human brain, using C/EBP-epsilon (Phospho-Thr74) Antibody. The picture on the right is blocked with the phospho peptide.

